

SEND POSTCARDS TO SPACE

“Hi, I’m Nick Patrick. After my career as a NASA astronaut, I came to Blue Origin to work as a Human Integration Architect, which means I help develop systems that will be used some day when millions of people living and working in space to benefit Earth.”



NEW SHEPARD

Named after Alan Shepard, the first American in space, this is Blue Origin’s fully reusable suborbital rocket system designed to take astronauts and research payloads past the Kármán line, the internationally recognized boundary of space, and back to Earth.

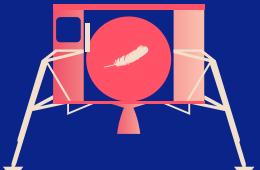


NEW GLENN

Named after John Glenn, the first American to orbit Earth, New Glenn is Blue Origin’s heavy lift launch vehicle designed for carrying people and large payloads routinely to Earth orbit and beyond.

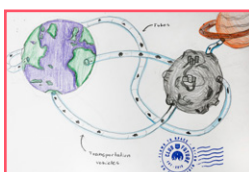
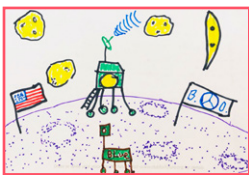
BLUE MOON

Blue Origin’s lunar lander will deliver large payloads to the lunar surface and is also capable of deploying payloads during its journey to the Moon. Its engines, precision guidance, and vertical take-off and landing capabilities build on New Shepard’s technology.



WHAT WOULD YOU INVENT IN SPACE?

YOUR MISSION: Sketch a prototype for a new technology that could be used to meet the needs of millions of people living and working in space. Once you’ve developed your idea, cut out the postcard below and draw your idea on the blank side along with the copy. Put your address and a stamp on the front, place it in an envelope and mail it to: **Club for the Future / PO Box 5759 / Kent, WA / 98064.** Blue Origin will send it to space and back on its New Shepard rocket. The postcard will then get stamped ‘Flown to Space’ and mailed back to you for a special space-flown keepsake.



On the blank side, draw or write your answer to what you would invent in space. On this side, write a message, your address, and add a stamp.

We may want to post your artwork online! Have your parent or guardian sign below to grant permission.

Parent/guardian

Parent/guardian (printed)

www.clubforfuture.org

CLUB FOR THE FUTURE

Place
Stamp
Here

Your Name

Your Street Address

City, State / Province

Zip Code

Country

TEACHER LESSON PLAN - SEND POSTCARDS TO SPACE

ENGINEERING FOR SPACE

INTRODUCTION

Opportunities for innovation in the space economy are increasing rapidly. A variety of new and exciting technologies are being developed for space travel and exploration. It's an exciting reality that your students will have the chance to bring their own engineering ideas for space to the forefront. In this lesson, students will take on the role of an engineer designing new technology that will help people living and working in space.

LEARNING OBJECTIVE

Sketch a prototype design for a new technology that could be used to help meet the needs of people living and working in space.

INSTRUCTIONS

- Brainstorm ideas for a prototype invention that will help people living and working in space.
- Choose the best idea and create a design sketch for your prototype.
- Use your design sketch to present your idea.
- Draw your favorite idea on your postcard.
- Send postcard to the Club for the Future where it will be sent to space and back on a Blue Origin New Shepard rocket.
- Tune in to watch the launch event.

LESSON EXTENSION

- Research current technology being used to help accomplish the goal of humans living and working in space.
- Research different types of space engineering jobs.

STANDARDS**NGSS**

MS-ETS1-1. - Define the criteria and constraints of a design problem with sufficient precision to ensure a successful solution, taking into account relevant scientific principles and potential impacts on people and the natural environment that may limit possible solutions.

CCSS.ELA-Literacy.SL.6.5

Presentation of Knowledge and Ideas:

Include multimedia components (e.g., graphics, images, music, sound) and visual displays in presentations to clarify information.

ISTE

4d - Students exhibit a tolerance for ambiguity, perseverance and the capacity to work with open-ended problems.

REFLECTION

- Ask students to share their ideas for a prototype invention on a postcard that will help people living and working in space.
- Ask students to partner up with others who have business ideas of their own to discuss and share how they could work together.



POSTCARD INSTRUCTIONS

SEND A POSTCARD TO SPACE

Club for the Future is asking students around the world to send postcards with their dreams of the future and vision for life in space. Once you have your idea based on the prompt in the lesson plan, draw or write your idea on a postcard and mail it to the Club using the instructions below. The Club will launch your postcard to space and back on a Blue Origin New Shepard rocket. Upon your postcard's return from space, it will be stamped "Flown to Space," then mailed back to you as a special space-flown keepsake.


ADDRESSING YOUR POSTCARD TO SPACE (AND BACK)

01




USE A 4x6" (10x15cm) POSTCARD, NOTECARD OR DOWNLOAD AND PRINT THE TEMPLATE.

02



ON ONE SIDE, DRAW OR WRITE YOUR IDEA FROM THE LESSON PLAN PROMPT.

03



ON THE OTHER SIDE, WRITE YOUR RETURN ADDRESS AND ADD A STAMP.


04



CLUB FOR THE FUTURE
PO BOX 5759
KENT, WA 98064 U.S.A.

PLACE THE POSTCARD IN A STAMPED ENVELOPE ADDRESSED TO CLUB FOR THE FUTURE. IF YOU HAVE MULTIPLE POSTCARDS, PLACE THEM IN A LARGE ENVELOPE OR BOX AND MAIL THEM TO THE CLUB IN BULK.

05



DROP THE ENVELOPE IN THE MAIL. THE CLUB WILL LAUNCH IT TO SPACE ON A BLUE ORIGIN NEW SHEPARD ROCKET AND RETURN IT TO YOU!

WWW.CLUBFORFUTURE.ORG

FUELED BY BLUE ORIGIN